

DUCKS UNLIMITED CANADA

PROJECT

Worth Marsh



BC PEACE COUNTRY 76 km northeast of Chetwynd



COMMON WILDLIFE

Canada Goose
American Wigeon
Lesser Scaup
Bufflehead
Common Goldeneye
American Coot
Mule Deer
Eared Grebe
Pied-Billed Grebe
Black Bear
Sandhill Crane
Mallard
Blue-winged Teal
Moose

Highlights

The Worth Marsh project consists of 313.9 hectares of wetland and pasture.

It is a BC Prairie Care project that features the management of key wetland

habitat and water levels through the installation of water level controls.

Secondarily, upland habitat is managed to optimize cover and wildlife grazing habitats.

Worth Marsh landowners consist of two long-standing partner organizations and the Penalty Ranch. These have signed conservation agreements with Ducks Unlimited Canada providing long-term security for this project area and its improvements.

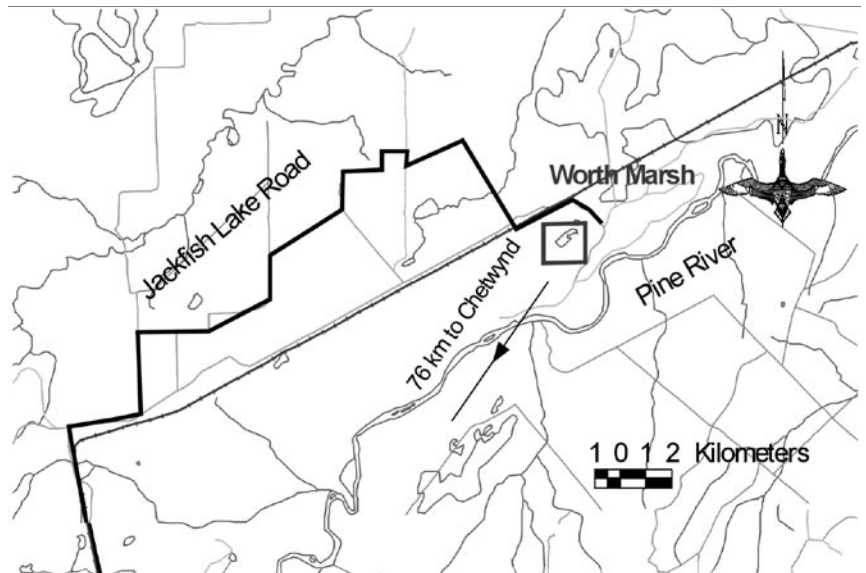


Ducks Unlimited Canada
CANADA'S CONSERVATION COMPANY

1-800-665-DUCK • moreinfo@ducks.ca • www.ducks.ca

Ducks Unlimited Canada conserves, restores and manages wetlands and associated habitats for North America's waterfowl. These habitats also benefit other wildlife and people.

Worth Marsh



BC PEACE COUNTRY 76 km northeast of Chetwynd



North American Waterfowl
Management Plan
Plan nord-américain de
gestion de la sauvagine
Plan de Manejo de Aves
Acuáticas de Norteamérica



Partners:
Agriculture and Agri-Food Canada (PFRA)
BC Ministry of Water, Land & Air Protection
BC Ministry of Forests
BC Ministry of Agriculture, Food & Fisheries
Environment Canada, Canadian Wildlife Service
Ducks Unlimited Canada

PROJECT PARTNERS:

- Project Partners
- The BC Ministry of Water, Land & Air Protection
- BC Habitat Conservation Trust Fund
- Ducks Unlimited Canada
- The Nature Trust of British Columbia
- Penalty Ranch

Background

The Worth project area is a large shallow but productive permanent wetland with over 50 small natural islands and dense emergent vegetation covering about half of the surface area. The surrounding lands consist of willow and sedge wetlands, aspen forests and shrub land, all of which provide diverse habitats for local wildlife.

Wetland habitats in this area are vulnerable to local drainage practices and water levels can be unstable because of either the damming of outlet flows by beavers or road construction activities caused by a very active oil and gas industry. This project has helped resolve this key issue through the construction of an earthfill dam and water control, provision of alternative water supplies for nearby livestock, and the installation of two Clemson Pond Levelers, special devices that allow water level management in spite of beaver activities.

Project funding for this project comes from BC Prairie Care and the BC Habitat Conservation Trust Fund.



Ducks Unlimited Canada
CANADA'S CONSERVATION COMPANY

1-800-665-DUCK • moreinfo@ducks.ca • www.ducks.ca

Ducks Unlimited Canada conserves, restores and manages wetlands and associated habitats for North America's waterfowl. These habitats also benefit other wildlife and people.